

Type TR60

by **lindapter**[®]

The TR60 is a composite decking fixing designed for the TR60, TR60+, TR80 and TR80+ profiles manufactured by Structural Metal Decks (SMD[®]). As with Lindapter's entire range of high quality, cost effective composite decking fixings, the Type TR60 is designed to fit inside the dovetail shaped re-entrant channel of the decking profiles for which it is designed.



KEY BENEFITS

- ▶ Fast, cost effective installation
- ▶ No special tools required
- ▶ No weakening of decking profiles
- ▶ No damage to the surfaces of the decking
- ▶ No possibility of delamination
- ▶ Adjustable and easy to remove

COMPATIBLE DECKING PROFILES

Lindapter's Type TR60 is compatible with the following Structural Metal Decks (SMD) profiles:

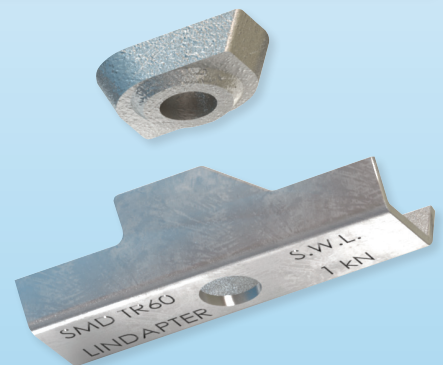
TR60 & TR80



TR60+ & TR80+

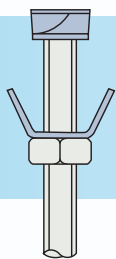


Product Code	Rod 4.6	Safe Working Loads (3:1 Factor of Safety)	
		Tensile / 1 Rod kN	Tightening Torque Nm
TR6006	M6	1.0	10
TR6008	M8	1.0	10
TR6010	M10	1.0	10



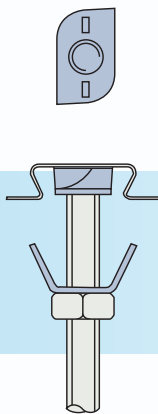
STEP BY STEP INSTALLATION

1



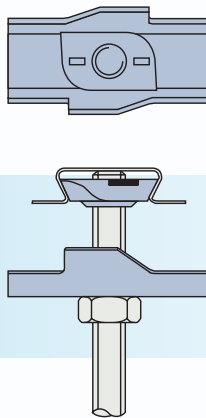
Pre-assemble the locking plate and wedge (flat surface facing up) onto the threaded rod.

2



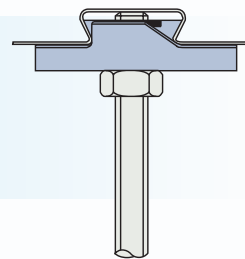
Insert wedge into the re-entrant channel of the decking and rotate until the chamfered cams engage on the sides of the channel.

3



Slide the plate up the threaded rod and over the wedge to lock it into position in the channel.

4



Tighten the locknut beneath the plate to hold the assembly in position.

Note: If the decking profile is deformed/distorted, the fixing should not be installed. If in doubt, please contact Lindapter's Technical Support Department for advice.



CASE STUDY MARKS & SPENCER DISTRIBUTION CENTRE, UK



Location:
Castle Donnington, UK
Application:
Securing building services from SMD composite decking

Lindapter's Type TR60 was used in the huge new distribution centre to suspend M&E and sprinkler systems from SMD's TR60+ composite decking. The easy to install fixings provided an adjustable solution for precise alignment of piping and cable tray supports.

