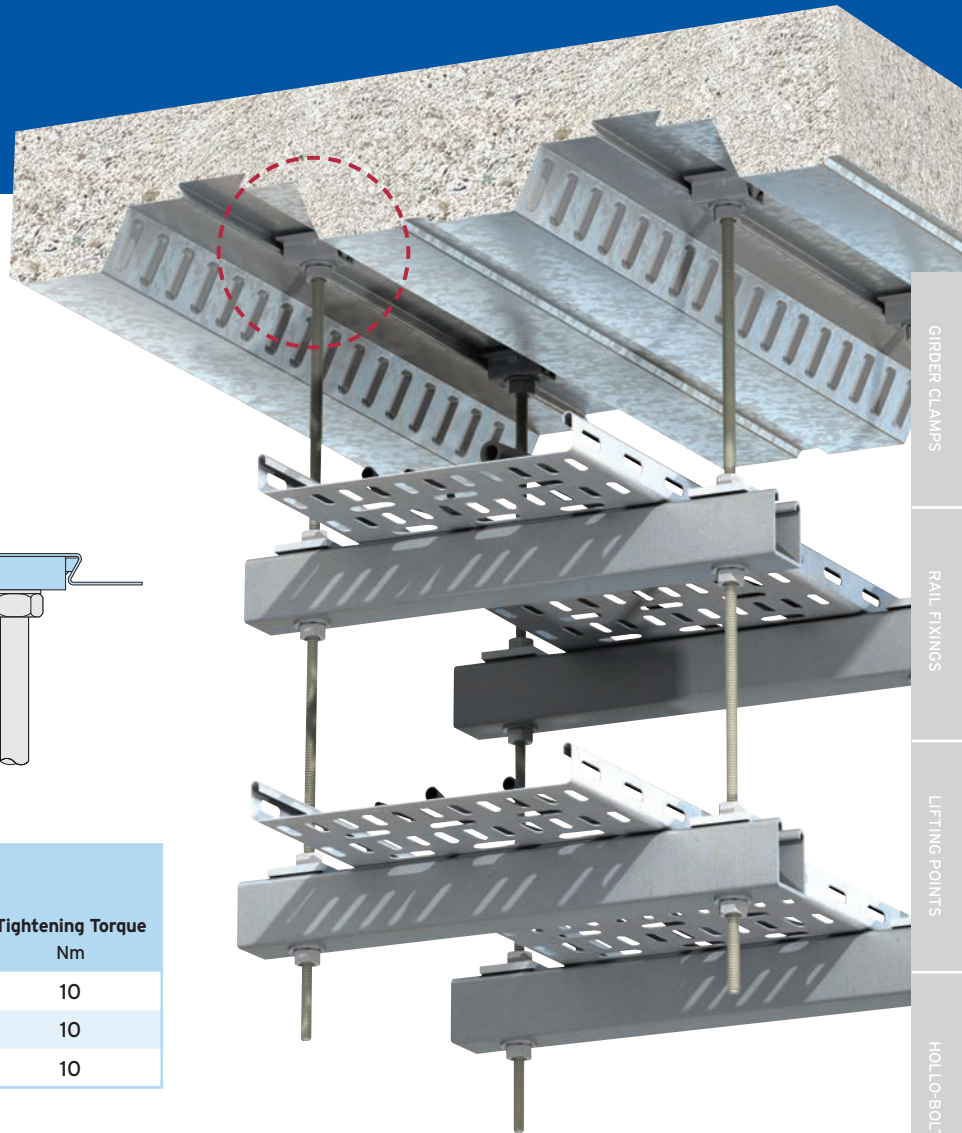
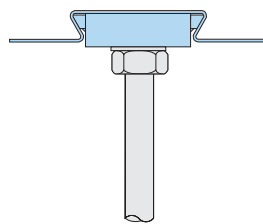
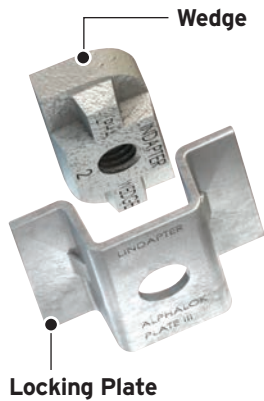


Type AW - Alphawedge

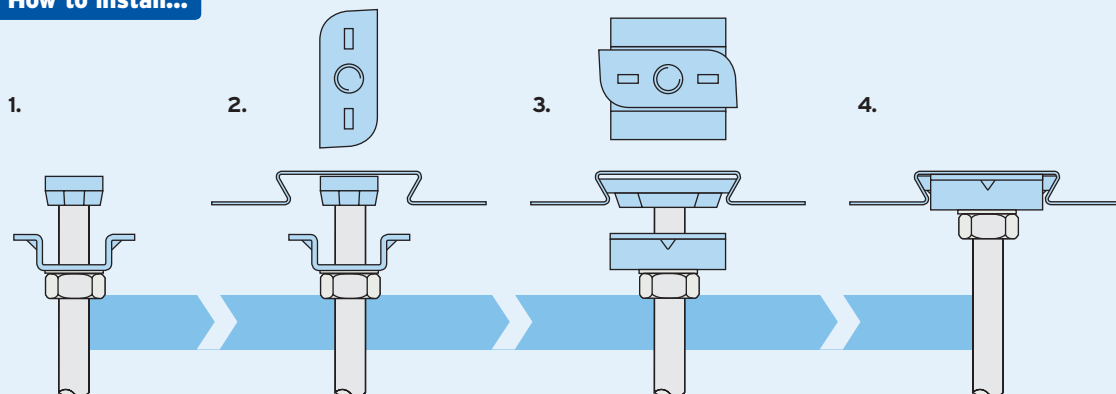
Designed for Ribdeck® E60 profiles manufactured by Hare Decking (formerly Richard Lees®).



Locking Plate: Pre-galvanised strip
Wedge: Malleable iron, zinc plated.

Product Code	Rod min 4.6	Safe Working Load (FOS 3:1)	
		Tensile / 1 Rod kN	Tightening Torque Nm
AW06	M6	1.0	10
AW08	M8	1.0	10
AW10	M10	1.0	10

How to install...





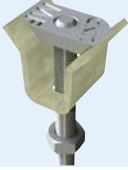
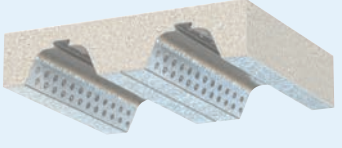
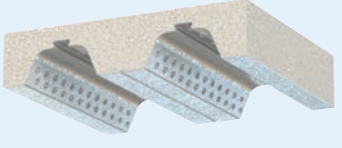


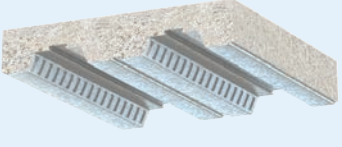

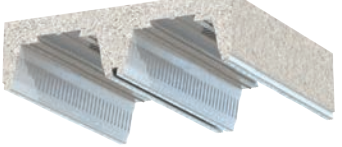
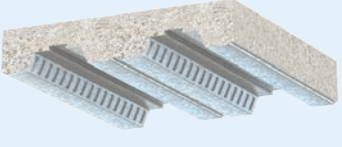
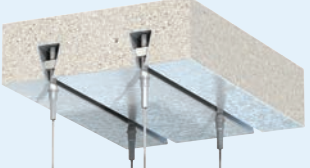
- 1) Pre-assemble the locking plate and wedge (flat surface up) onto the threaded rod.
- 2) Insert the wedge into the re-entrant channel of the decking and rotate 90°.
- 3) Slide the plate up the threaded rod, over the wedge, to lock it in position into the channel.
- 4) Tighten the locknut beneath the plate to hold the assembly in position.

- Install the decking fixings after the concrete has been poured and has reached full strength.
- If the decking profile is deformed or distorted, do not install the fixing. If in doubt, contact the Technical Support team for advice.



Product Comparison

The table below shows the various components that are designed to fit the decking profiles of major manufacturers such as Composite Metal Flooring (CMF®), Kingspan® Structural Products and Structural Metal Decks (SMD).

Components

Lindapter Decking Fixing	Compatible Composite Decking Profile(s)
<p>Type TR60 page 64</p> 	<p>Structural Metal Decks (SMD) TR60+ and TR80+</p> 
<p>Type MF page 65</p> 	<p>Composite Metal Flooring (CMF®) MetFloor® 60 and MetFloor® 80</p> 
<p>Type MW2 - Multiwedge 2 page 66</p> 	<p>Kingspan® Structural Products Multideck® 60 and Multideck® 80</p> 
<p>Type AW - Alphawedge page 67</p> 	<p>Hare Decking (formerly Richard Lees®) Ribdeck® E60</p> 
<p>Type SD2 - Slimdek 2 page 68</p> 	<p>Tata Steel® Europe ComFlor® 225</p> 
<p>Type VN page 69</p> 	<p>Fits several profiles including: R51 (SMD), ComFlor® 51 (Tata Steel®), Holorib® (Hare Decking), Superib® (Hare Decking), Multideck® 50 (Kingspan®) and MetFloor® 55 (CMF®)</p> 

Also available

<p>Type TC - Toggle Clamp page 69</p> 	<p>Designed for: Service suspension from pre-cast hollow core slabs (minimum core depth of 75mm) as well as Structural Hollow Section (SHS), steel sheeting or purlins.</p> 
--	--